



Lennon, Smith, Souleret
Engineering, Inc.

Civil Engineers and Surveyors

LSSE News

*Lennon, Smith, Souleret
Engineering, Inc...
one of the region's largest
engineering units dedicated
solely to civil engineering.*

Fall 2013

LSSE provides Civil-Site Design for Region's Largest Food Distribution Center

On September 23, 2013, Gordon Food Service (GFS), the 39th largest private company in the United States, held a ground breaking to begin construction of their new 420,000 SF distribution center, 23,600 SF office building and 15,300 SF vehicle maintenance facility located on a 62 acre parcel of land in Findlay Township, Allegheny County at the Findlay Industrial Park owned by Imperial Land Corporation.

The site plan consists of a distribution center with 82 dock positions at full build out, a vehicle maintenance facility with truck wash, an office area, 172 truck parking spaces, and a 350 space parking area.

As a subconsultant to Providence Engineering (prime consultant to Whiting Turner), LSSE was part of the design team responsible for completing the civil-site design and permitting for this project which included a 62 acre land development plan and 1,500 LF of Township road.

LSSE prepared an initial NPDES permit in mid-June to facilitate an aggressive design and permitting schedule necessary to meet a September 2013 start of construction. The development plans were due to the Township in early July.

LSSE, in conjunction with the other consultants, simultaneously

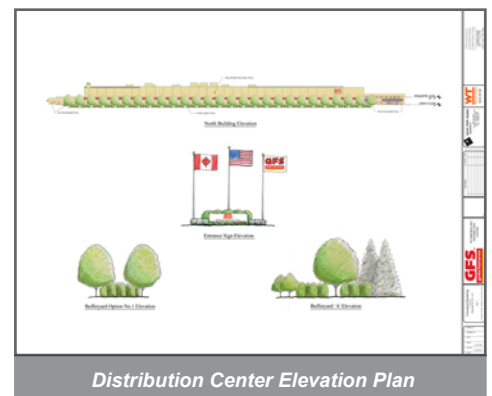
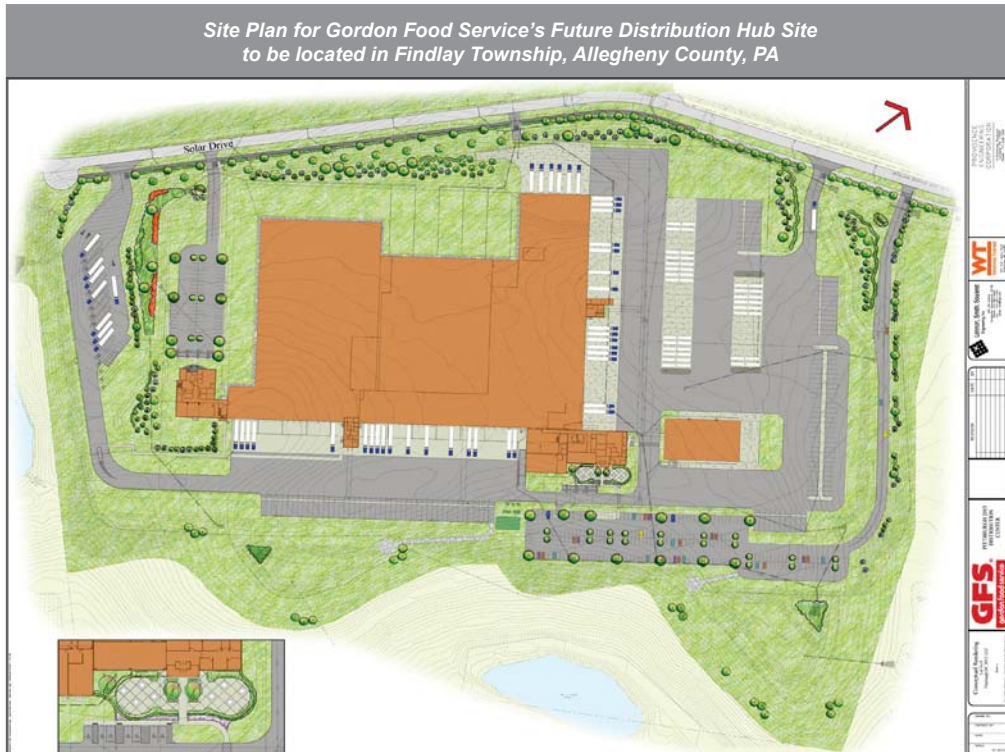


LSSE's Principal/Assistant Vice President, Kevin Brett, P.E. participates in September 23rd Ground Breaking

prepared the facilities plan, subdivision, and land development plans and worked with the utility providers to design and permit extensions to the site.

LSSE's scope included grading, drainage, utility, lighting, cross sections, profiles and details for the 350 car parking lot, along with stormwater management which incorporated green infrastructure BMPs including rain gardens, vegetated swales and forebays.

GFS plans to open the distribution center in Spring 2015.



Distribution Center Elevation Plan

Recent Project and Client Highlights



Collier Township Community Center
Ground Breaking on July 26th

■ **Collier Township Breaks Ground on \$5.6 Million Community Center (Allegheny County)** - Collier Township kicked off construction of their new rec center on July 26, 2013. The \$5.6 Million, 38,000 SF Community Center located in Collier Community Park will include a gymnasium, walking track, fitness studio, group exercise rooms, lounge, locker rooms, and banquet rooms. LSSE is currently providing the civil-site design, permitting and utility coordination for the Community Center and Phase 1 of the park.

■ **Martinsburg Municipal Authority Chairman Retires after 53 Years of Serving the Community (Blair County)** - In a situation where your every decision substantially impacts your family, friends, and neighbors, it takes a uniquely qualified and dedicated individual to succeed on a small community municipal authority for any extended period of time. It takes a man of vision to serve 53 years dealing with both potable water and wastewater issues in an ever-changing regulatory framework. Such is the mettle of Robert M. Greenleaf who recently retired as Chairman of the Martinsburg Municipal Authority in Blair County, an LSSE client since 1989.

A small businessman and local bank board member, Greenleaf was appointed to the newly formed joint sewer and water authority that faced substantial challenges in both the sewer and the water systems. Infiltration/Inflow resulting in widespread basement flooding and sanitary sewer overflows, replacing a deficient sewage treatment plant with a modern plant designed to meet Chesapeake Bay nutrient loads, deep rock fracture trace

wells in caving formations, well field SWIP testing, an extended drought, randomly variant, but steadily increasing nitrate levels in the drinking source water, dam safety and watershed management for a small reservoir supply, land applied wastewater sludge disposal, emergency water system storage needs, and service area growth and expansion were just a few of the challenges Greenleaf faced as he lead the Authority from the 20th into the 21st century. At the end of 2012, Greenleaf stepped down from the Board and handed over an essentially debt-free Authority that owns and operates state-of-the-art wastewater and potable water treatment systems serving the Borough and portions of North Woodbury, Huston and Taylor Townships. With ample capacity for sustained growth in both systems, Martinsburg can boast among the lowest water and sewer user rates in the region.

If your legacy goal is to leave your community a better place than you found it, the bar has been set with Bob Greenleaf's service to the current and future customers of the Martinsburg Municipal Authority. We applaud his service and wish him well in retirement!



Bob Greenleaf retires after
53 years of municipal service

Recently Awarded Projects:

■ **Allison Hollow Road Improvements Project, Chartiers Township (Washington County)** - LSSE is providing engineering design and preparation of bid specifications for improvements to Chartiers Township in order to improve functionality of this narrow, rural road.

■ **Southmoreland High School Stormwater Design Project, Jacobs Creek Watershed Association (JCWA) (Westmoreland County)** - LSSE is providing engineering design services to JCWA for the design of stormwater Best Management Practices (BMP) at Southmoreland High School. LSSE tasks include field survey, easement acquisition, utility coordination, preparation of project plans, specifications and bid documents, permitting, and construction phase services.

■ **Allegheny County Sanitary Authority (ALCOSAN) Squaw Run Force Main Project (Allegheny County)** - Collective Efforts, LLC, with LSSE as a subconsultant, was recently awarded a contract to provide engineering services to ALCOSAN for the Squaw Run force main replacement and bypass pumping connections at the Squaw Run pump stations.

Tech Notes:

GIS in Municipal Asset Management by Jacob Spuck, GISP and Timothy D. Brett, P.E. - Municipalities large and small, rural and urban all have one thing in common - all are comprised of assets that must be managed on a daily basis. These assets range from infrastructure such as roads, bridges, sanitary and storm sewers to community amenities such as parks and recreational facilities.

Through GIS, municipalities can collect, analyze and display data about these assets in one place. Many Pennsylvania counties and municipalities have successfully applied GIS programs to achieve greater efficiencies in data acquisition, manipulation and long term infrastructure asset management.

To read the full article, visit the link below or scan the QR Code.

<http://www.lsse.com/assetmanagement.html>



TAKE A LOOK AT OUR NEW WEBSITE!



LSSE's new website (located at www.lsse.com) was rolled out in June 2013. The entire site was completely redesigned and the content was updated to provide viewers with a fresh new look, easy navigation, and up-to-date information on our firm's services, experience and employees.

Noteworthy additions to the site include:

- Under "About Us" in the top navigation, there is now an **"Involvement"** and **"Affiliations"** link to highlight our commitment to professional, community and charitable organizations.
- Under "News" in the top navigation, there is now a **"Presentations"** page, which includes a table of all recent LSSE employee presentations, Tech Notes, articles, etc.
- There is now a project gallery that can be found under **"Projects"** on the left navigation panel on the main page.

If you haven't had a chance to look at the site, visit www.lsse.com.



LSSE Lights the Night:

LSSE is again sponsoring this year's Leukemia & Lymphoma Society's Light the Night Walk and has formed a Corporate Team to walk the evening of Thursday, October 10th at Heinz Field in Pittsburgh. The Light The Night Walk is an annual event held to raise funds to help aid those battling blood cancers. LSSE's team fund raising efforts over the past few months included:

- LSSE volunteer "chefs" offered homemade soup and bread at lunchtime on August 9th in LSSE's kitchen for voluntary donations to LLS.
- A 50/50 raffle and raffles to win an executive's parking spot for a week, golf or sporting clays, a ½ Day Sail on Lake Erie or Presque Isle Bay, and a Steelers Football Pool for three different games to raise funds for LLS.
- LSSE volunteer "bakers" offered an array of baked goods in LSSE's kitchen for the entire day on August 23rd for voluntary donations to LLS.
- A fund raising event at Primanti Bros. in Moon Township on September 30th with a portion of each check to be donated to LLS.

For more information on the Light the Night Walk or if you are interested in donating or joining our walk team, please visit: www.lightthenight.org and search for Lennon, Smith, Souleret Engineering, Inc.

LSSE Welcomes New Employees

LSSE recently welcomed the following new full-time employees:

- Jenna Darr** joined LSSE as a full-time File Clerk.
- Charles Fahey**, graduate of Hudson Valley Community College, joined LSSE as a CAD Designer.
- Jacob Spuck, GISP** joined LSSE as a GIS Analyst. He is currently studying towards his Doctor of Philosophy, Geography/Environmental Science at Florida State University. Mr. Spuck has a M.S. in GIS/Environmental Planning from Indiana University of Pennsylvania and a B.S. in Physical Geography, Anthropology from Clarion University of Pennsylvania.
- Andrew Leslie**, graduate of Youngstown State University with an Associate of Applied Science Degree in Civil and Construction Engineering Technology, joined LSSE as a Survey Technician.
- Christopher D. Berilla, E.I.T.** joined LSSE as an Assistant Engineer. He holds a B.S. in Civil Engineering Technology from the Pennsylvania College of Technology.

And the following contract employees:

- Marc A. Petrell, E.I.T.**, graduate of the Pennsylvania State University; **David L. Kovac, E.I.T.**, graduate of the University of Pittsburgh; **Jonathan Turban, E.I.T.** graduate of the University of Pittsburgh; and **Derek Callihan, E.I.T.**, graduate of the University of Pittsburgh at Johnstown recently joined LSSE as Resident Project Representatives.
- Nathan Helbig** recently joined LSSE as a CAD Designer. He is a graduate of Pittsburgh Technical Institute with an A.S. in Computer Aided Drafting.

2013 LSSE Company Picnic

This year's annual company picnic was held on August 16th. LSSE employees and family members took some time to enjoy the great weather, delicious food and even play a few games. Service awards for 2013 included: Michael Bernard for 20 years; Jo Powell for 15 years; Larry Lennon, Jr. for 10 years; Adrian Halterlein for 5 years; and Ryan O'Mahony for 5 years. Thanks for your years of service!



Sail Away: LSSE Principal's Avocation Helps Others

■ On July 8th, LSSE's Dan Gilligan and wife Kathy, volunteered and skippered their sailboat in Erie Yacht Club's 23rd Annual Frolic on the Bay Picnic and Sail for Children with physical, chronic and life threatening conditions. Participating organizations included MECA / United Cerebral Palsy, Muscular Dystrophy Association, Make-A-Wish Foundation, and the Juvenile Diabetes Research Foundation. The Gilligan's sailing crew included a young family caring for children with juvenile diabetes and palsy.

■ In addition, LSSE sponsored Gilligan's A'ile-Muir in the Erie Yacht Club's annual Charity Regatta race, held on August 25th, to benefit local disaster relief through the Greater Erie Chapter of the American Red Cross. Over 75 boats participated in the event.



Congratulations!



- In June 2013, [Robert C. Melnek, P.E.](#) became a registered Professional Engineer in Pennsylvania.
- [Jacob Spuck, GISP](#) became certified as a Geographic Information Systems (GIS) Professional in June 2013.
- [Timothy D. Brett, P.E.](#) and wife, Lindsey, welcomed baby Carter Dale Brett on April 17, 2013.

Upcoming Events:

OCTOBER 10, 2013 - The Leukemia & Lymphoma Society (LLS) Light the Night Walk at Heinz Field in Pittsburgh, PA

OCTOBER 16-17, 2013 - 15th Annual 3 Rivers Wet Weather Sewer Conference at Monroeville Convention Center, Monroeville, PA (Visit us at Booth #2!)

DECEMBER 6, 2013 - Save the Date for LSSE's Christmas Party (invitation to follow)

Lennon, Smith, Souleret Engineering, Inc.

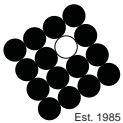
LSSE News is published for the benefit of our clients, associates and friends. Further information can be obtained by contacting Daniel S. Gilligan, Managing Principal/Vice President at (412) 264-4400. www.lsse.com • info@lsse.com

Headquarters Office: 846 Fourth Avenue, Coraopolis, PA 15108 • (412) 264-4400 • (412) 264-1200 Fax
Branch Office: 4536 Route 136, Suite 1, Greensburg, PA 15601 • (724) 837-1057 • (724) 838-9811 Fax

Managing Principals: Lawrence J. Lennon, P.E., D.WRE; Larry W. Souleret, P.E., P.L.S.; and Daniel S. Gilligan
Principals: Ned Mitrovich, P.E.; Jason E. Stanton, P.E.; and Kevin A. Brett, P.E.



MUNICIPAL | WATER & WASTEWATER | SITE DESIGN/LAYOUT | ROADWAY & PAVEMENT | STORMWATER | PARKS & RECREATION | GIS/MAPPING | GRANTS ADMINISTRATION



Est. 1985

**Lennon, Smith, Souleret
Engineering, Inc.**

Civil Engineers and Surveyors

846 Fourth Avenue
Coraopolis, PA 15108