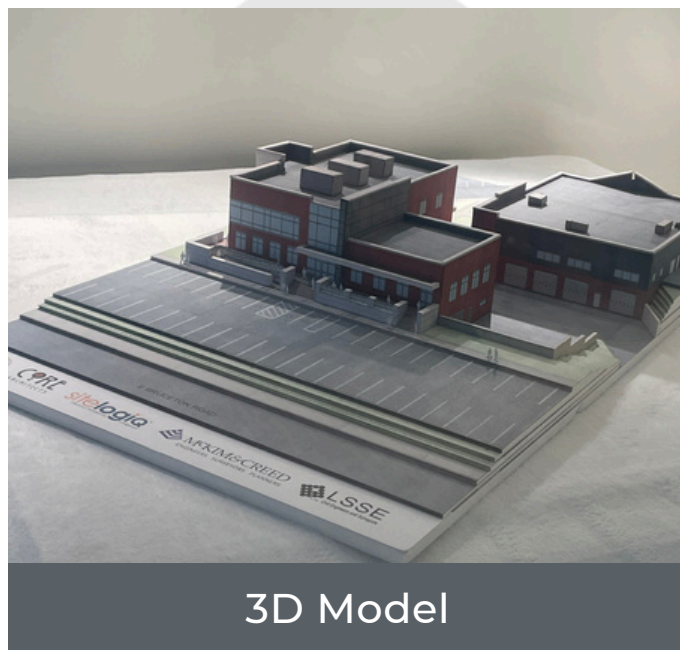


NEWSLETTER

Pleasant Hills Borough Municipal Building

LSSE is pleased to announce the completion of the Pleasant Hills Municipal Building. LSSE provided needs assessment and preliminary planning starting in 2018 as the municipal engineer to civil-site engineering, surveying, permitting, and multi-disciplinary coordination services as a sub-consultant to the Borough's project architect throughout the project's duration — from groundbreaking in July 2023 through completion in November 2025. The building was dedicated to the Pleasant Hills community on December 13, 2025.

The project centered on the in-place demolition and complete reconstruction of the existing Municipal, Police, and Public Works facilities. In place now stands a modern masonry and glass structure totaling approximately 24,245 square feet, housing upgraded municipal offices, a new police department with dedicated access, improved public amenities, enhanced parking, and stormwater detention improvements that blend within the adjacent residential community and recreational facilities.



3D Model

Simultaneously, the adjacent Public Works building underwent an in-place remodel and expansion, bringing that facility to approximately 12,525 square feet with upgraded garage access, modernized maintenance areas, improved storm facilities, and enhanced amenities for Public Works staff.

The Pleasant Hills Municipal Building stands as a testament to the value of thoughtful planning and civil engineering as well as seamless coordination across a complex, multi-stakeholder project. LSSE is proud to have played a central role in delivering this lasting community asset to a long-tenured valued client.



In This Issue

- Project Spotlight: Pleasant Hills Borough Municipal Building - Page 1
- Project Spotlight: Center Township Municipal Park - Page 2
- Project Spotlight: Castle Shannon Hamilton Park - Page 2
- General Updates - Page 3
- Staff News - Page 4

PROJECT SPOTLIGHT

Center Township Taddeo Municipal Park



With renovations to the Municipal Building now complete, attention turned to ongoing improvements at Fred Taddeo Municipal Park. Upgrades include two new 2,400 sq. ft. pavilions, a 4,700 sq. ft. playground with a new play structure and swing set, sidewalks, walking paths, pedestrian lighting, restroom renovations, and resurfaced tennis and basketball courts. Two new pickleball courts and updated court lighting round out the improvements.



Looking ahead, Center Township and LSSE are excited to announce that the next phase of the project — the highly anticipated 4 Season Pavilion — is slated to go to bid this Spring. Located at the southern end of the park, this approximately 4,000-square-foot facility is designed to serve residents year-round. The pavilion will feature a 2,500 sq. ft. rentable event space, restrooms, patio areas, additional parking, and direct trail access — making it an ideal venue for community gatherings. Notably, the structure will also provide publicly accessible restrooms to the broader park.



Center Township and LSSE look forward to bringing this exciting new amenity to the community.

Castle Shannon Hamilton Park

In 2025, Hamilton Park underwent a significant transformation.

At Upper Hamilton, residents will find upgraded playground equipment, a brand-new splash pad, and improved pedestrian circulation throughout the park. Lower Hamilton saw equally impressive changes — a newly constructed retaining wall nearly doubled the available parking capacity, all while a new synthetic multi-sport field was designed to accommodate a wide range of sports and age groups. Walking trails were also improved, while the existing tennis court was repurposed to add pickleball amenities.



The centerpiece of the renovation is a new multi-purpose pavilion that houses public restrooms and a kitchen, and can be configured as an outdoor amphitheater for community events.

Castle Shannon continues to invest in its parks and overall community — and the best is still to come.



GENERAL UPDATES

Regulatory Notice

IMPORTANT UPDATE: DEP GUIDANCE ON ACID-PRODUCING ROCK DURING CONSTRUCTION ACTIVITIES

The Pennsylvania Department of Environmental Protection (PaDEP) has issued guidance addressing the management of acid-producing rock (APR) encountered during construction activities. APR — rock containing pyrite that generates sulfuric acid when exposed to air or water — poses a risk of polluting nearby streams and groundwater if not properly handled. Early planning and proper site characterization are essential to avoid project delays and potential liability under the Pennsylvania Clean Streams Law.

Those Affected:

- Contractors, Developers, Authorities, and Municipalities conducting earth disturbance activities in areas underlain by pyrite-rich rock or coal seams.

Requirements:

- Where site characterization using tools such as eMapPA and the Pennsylvania Mine Map Atlas identify the potential for APR, testing from a licensed professional should be conducted to determine the concentration of sulfur within the soils.
- Rock testing above 0.5% sulfur is classified as APR and must be managed per an approved soil management plan.

Questions?

If you have questions or need guidance, contact John R. Heyl, P.E., CPESC at john.hey@lsse.com

Management Options:

- On-site neutralization or encapsulation of APR. This does not include Coal.
- Off-site disposal at a DEP-authorized landfill or coal refuse disposal area.
- An Incidental Coal Extraction permit is required if coal is removed for commercial use.

Why This Matters?

- Failure to properly manage APR can result in acid drainage that pollutes streams and groundwater, leading to potential stop work orders, enforcement actions and project delays. Compliance protects both the environment and your project timeline.



Albion Office Update

We are pleased to announce the completion of our new garage, purpose-built to support our survey operations equipment.

In addition to the garage, LSSE's regional office in Erie County was also renovated on the interior and exterior, showing LSSE's commitment to supporting the needs of our clients in Northwestern PA.



Grants and Funding

During November 2025 – March 2026, we are pleased to announce recent funding awards totaling **\$30,056,500**:

- CFA LSA - \$10,091,000
- GEDTF - \$1,830,000
- CFA Multimodal - \$9,207,500
- CFA PA Small Water and Sewer - \$7,144,000
- Green Light Go - \$1,732,000
- CFA Act 13 - \$52,000

Questions? Talk to the grants team!

Josh Callender, E.I.T. (jcallender@lsse.com)

Wyatt Dishler (wdishler@lsse.com)

Drew Null, P.E. (dnull@lsse.com)

Emily Palmer (epalmer@lsse.com)

Matthew Pitsch, P.E., C.B.I. (mpitsch@lsse.com)

New Clients

- Western Beaver County School District
- Hickory Township
- Conway Borough
- Chestnut Venture
- City of Farrell
- Fort LeBoeuf School District
- Westmoreland County
- Georgetown Borough
- North Fayette Transportation and Business Improvement Authority

Welcome Back!

- Collier Township

GENERAL UPDATES

Department Changes

Congratulations on your new roles!

- Wyatt Dishler has been named Supervisor of the Facility Design Unit
- Drew Null has been named Supervisor of the Linework Design Unit

Welcome to the Team

- Mike Anderson
- Cole Riley, PE
- Bryan Dehart
- Mark Nrecaj
- Dan Connolly, EIT
- Kristen Anderson
- Cory Riley
- Hannah Lorah
- Erin Shetler
- Jacob Weiler
- Maggie Hart

Certifications & Licenses

- Nathan Mathewson - Bachelor's Degree in Surveying Engineering Technology from the University of Maine, and he received his Surveyor in Training (SIT) Certification.
- Nathan Guntrum on receiving his Professional Engineer License (PE)

Congratulations Richard Kovach

Richard Kovach, Authority Manager, Peters Creek Sanitary Authority, was named the Decision Maker of the year by the Pennsylvania Rural Water Association.



We are proud to work with someone whose leadership, commitment to excellence, and dedication to strong daily operations have made a lasting impact. Please join us in celebrating this well-deserved achievement!

LSSE Endowed Program Fund



The LSSE Endowed Program Fund via Penn State Outreach is making a real difference in the Pittsburgh region. In 2024–25, the fund supported 30 Landforce trainees through Penn State's 35-hour National Green Infrastructure Certification Program — and since 2020, 71 graduates have completed the program with an impressive 85% job placement rate.

This school year, the fund will contribute \$4,000 in partnership with Landforce's U.S. EPA Workforce Development Grant to support an additional 20 unemployed or underemployed trainees in green infrastructure careers.

Save the Date

- May 13th - Client Regulatory Meeting
- August 7th Annual Company Picnic
- December 5th - Northern Holiday Party
- December 11th - Pittsburgh Holiday Party

LSSE Newborn

- Savannah and Connor Mack welcomed Olive Mack on January 12.



Managing Principals

Kevin A. Brett, P.E.
Ned Mitrovich, P.E.
Jason E. Stanton, P.E.

Principals

John R. Heyl, P.E., CPESC
Lawrence J. Lennon, Jr., P.E.
Shawn R. Wingrove, P.E.

Headquarters

846 Fourth Ave
Coraopolis, PA 15108
412-264-4400

www.lsse.com
info@lsse.com

Branch Locations

Allegheny County, PA	Erie County, PA
Armstrong County, PA	Franklin County, OH
Beaver County, PA	Washington County, PA
Butler County, PA	Westmoreland County, PA
Clarion County, PA	